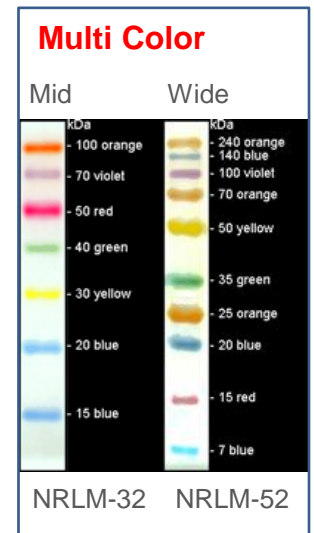
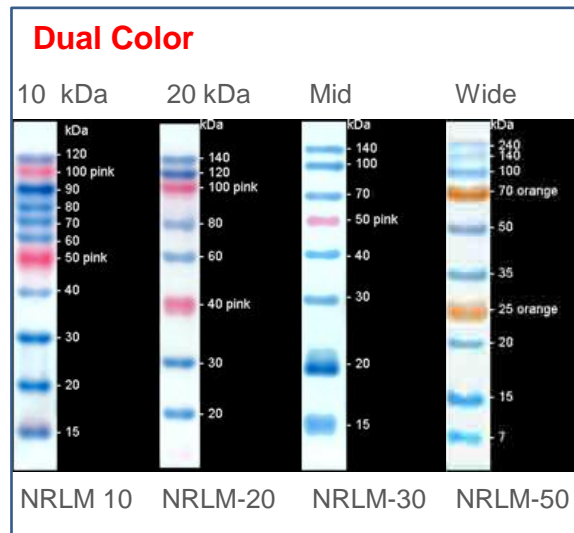
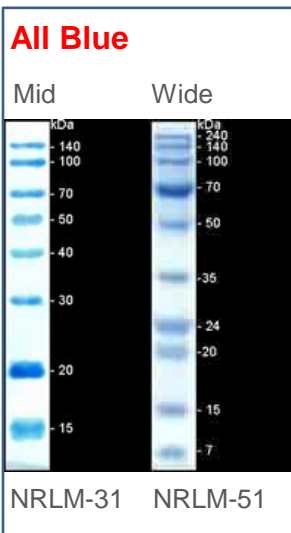


Ultra PRO™ Recombinant Color Protein Markers

Designed for Clear and Optimal Resolution in Every Range

Product Highlights

- Optimal resolution from 7kDa to 240 kDa
- Stable markers with All-Blue, Dual-Color or Multi-Color
- Optimized separately for Coomassie Blue and silver stain
- Available in ready-to-use format for direct loading in gels
- Each vial comes with 250 µL (enough for loading 50 gels)
- Available in 10 kDa, 20 kDa, Mid and Wide Ranges



NRL recombinant color pre-stained protein markers consist of 10 color proteins whose molecular weights are well adjusted ranging from 7 kDa to 240 kDa. Provided markers are pre-blended in a ready-to-use formulation and require no pre-heating or dilutions. Protein bands are visible during the SDS-PAGE electrophoresis of gels or electroblotting onto membranes. The combination of six different color proteins offers a good contrast and each color serves as reference for a particular size. Because coupling of chromophores to proteins alter their apparent molecular weights in SDS-PAGE, NRL unstained protein standards (PMW-001-006) are highly recommended where more accuracy over 95% are required.

Ordering Information

Catalog #	Product Description	Price, \$
NRLM-10	Ultra PRO™ 10 kDa Dual-Color r-Protein Markers, 0.25 ml	150.00
NRLM-20	Ultra PRO™ 20 kDa Dual-Color r-Protein Markers, 0.25 ml	150.00
NRLM-30	Ultra PRO™ Mid Range Dual-Color r-Protein Markers, 0.25 ml	150.00
NRLM-31	Ultra PRO™ Mid Range All-Blue r-Protein Markers, 0.25 ml	150.00
NRLM-32	Ultra PRO™ Mid range Multi-Color r-Protein Markers, 0.25 ml	150.00
NRLM-50	Ultra PRO™ Wide Range Dual-Color r-Protein Markers, 0.25 ml	150.00
NRLM-51	Ultra PRO™ Wide Range All-Blue r-Protein Markers, 0.25 ml	150.00
NRLM-52	Ultra PRO™ Wide Range Multi-Color r-Protein Markers, 0.25 ml	150.00