

## **Ultra PRO™ Reversible Stain For Western Blots**

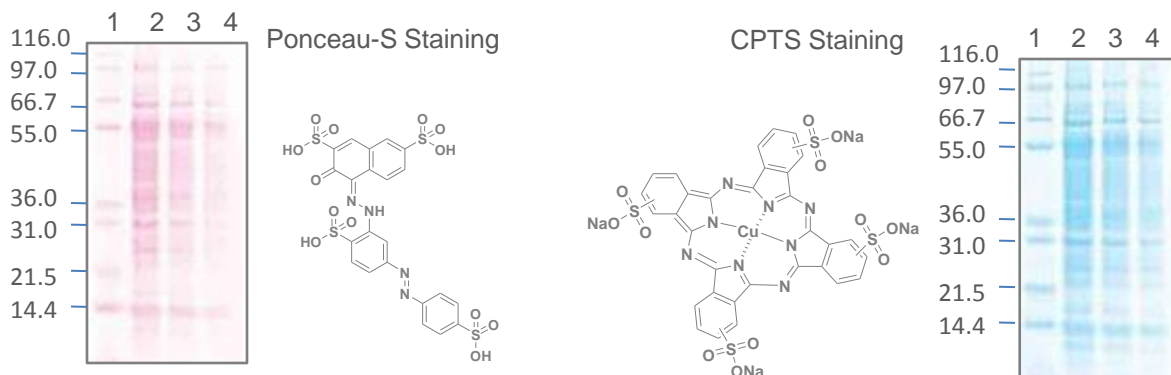
Ready-to-use, staining of Protein Bands in Membranes

### Product Highlights

- One-step unique stain for visualizing bands in membranes
- Confirm every-time total transfer of protein
- Stain proteins in nitrocellulose and PVDF membranes
- Protein can be detected in micro-gram ranges
- Bands can be destained with water for antibody probing
- Does not alter antibody recognition for western blotting
- Select either Ponceau-S Dye (red) or CPTS dye (blue)



NRL-Reversible Ultra-PRO western blot can be used for rapid reversible detection of protein bands on nitrocellulose, or PVDF membranes as well as on Cellulose Acetate membranes. Stained proteins are easily reversed with water washes, facilitating subsequent antibody probing. The stain is useful because it does not appear to have a deleterious effect on the sequencing of blotted polypeptides and is therefore one method of choice for locating polypeptides on Western blots for sequencing.



Liver proteins were applied on 4-20% SDS-TG gels, transferred on to Immobilon-P membranes. Membranes were stained with Reversible stains (Ponceau-S red or CPTS). Reversible blots can be stored and destained with water for probing with antibodies.

### Ordering Information

Catalog #	Product Description	Price, \$
RSWB-001	Ultra PRO™ Reversible PS Stain For Blots (1 x 500 ml)	80.00
RSWB-002	Ultra PRO™ Reversible PS Stain for Blots (2 x 500 ml)	150.00
RSWB-003	Ultra PRO™ Reversible CPTS Stain For Blots (1 x 500 ml)	80.00
RSWB-004	Ultra PRO™ Reversible CPTS Stain for Blots (2 x 500 ml)	150.00